



# SWK-2000 Series

## Filter Element Replacement Instructions

The unique advantage of a Separ Filter is the ability to backflush the filter. This reduces downtime and saves you filter element cost. Typically the Separ filter can be backflushed up to 5 times before being replaced.

**Step 1** Stop engine or change to other filter if duplex system. Shut off the fuel supply valve.



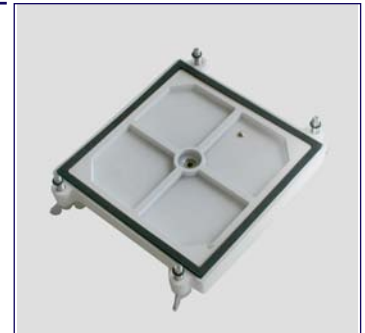
**Step 5** Lift out filter element by the handle. Replace with new filter element. Re-fit the spring cassette.



**Step 2** Loosen the lid screws evenly.



**Step 6** Inspect lid gasket. Replace if necessary.



**Step 3** Remove the lid.



**Step 7** Fit lid checking for correct positioning. Fit lid checking for correct positioning. Evenly tighten in the sequence shown.



**Step 4** Take out the spring cassette.



**Step 8** Open the fuel supply valve, prime fuel system and check for leaks.



For further technical information visit:

[www.separfilter.com](http://www.separfilter.com)

## SWK-2000 Filter Element Flushing Instructions

The unique advantage of a Separ Filter is the ability to backflush the filter. This reduces downtime and saves you filter element cost. Typically the Separ filter can be backflushed up to 5 times before being replaced.

- A** - Wing nut
- B** - Lid
- C** - Bleed screw
- D** - Filter housing
- E** - Bowl Flange
- F** - Clear Bowl
- G** - Valve
- H** - Valve handle



**Step 4** Open drain valve, push in and turn.



**Step 5** Drain out the water/dirt that has accumulated in the bottom of the bowl.



**Step 1** Turn the engine off (or switch to spare filter in duplex set up) Shut off the fuel supply valve.



**Step 6** Close drain valve Allow dirt/water to settle again. As the fuel is drained out of the separator in step 5, more dirt/water will be flushed from the filter and will collect in the bottom of the bowl.



**Step 2** Open the bleed screw This will break the vacuum in the filter allowing water and particulate matter to be released from the filter element.



**Step 7** If necessary repeat step 5 to 6. Open fuel supply valve.



**Step 3** Allow water and dirt to settle into bowl. Large droplets of water/dirt will fall to the bottom of the bowl.



**Step 8** Prime the filter. Close the bleed screw.





# SWK-2000 Series

## Filter Element Replacement Instructions

The unique advantage of a Separ Filter is the ability to backflush the filter. This reduces downtime and saves you filter element cost. Typically the Separ filter can be backflushed up to 5 times before being replaced.

**Step 1** Stop engine or change to other filter if duplex system. Shut off the fuel supply valve.



**Step 5** Lift out filter element by the handle. Replace with new filter element. Re-fit the spring cassette.



**Step 2** Loosen the lid screws evenly.



**Step 6** Inspect lid gasket. Replace if necessary.



**Step 3** Remove the lid.



**Step 7** Fit lid checking for correct positioning. Fit lid checking for correct positioning. Evenly tighten in the sequence shown.



**Step 4** Take out the spring cassette.



**Step 8** Open the fuel supply valve, prime fuel system and check for leaks.



For further technical information visit:

[www.separfilter.com](http://www.separfilter.com)



## SWK-2000 Filter Element Flushing Instructions

The unique advantage of a Separ Filter is the ability to backflush the filter. This reduces downtime and saves you filter element cost. Typically the Separ filter can be backflushed up to 5 times before being replaced.

- A** - Wing nut
- B** - Lid
- C** - Bleed screw
- D** - Filter housing
- E** - Bowl Flange
- F** - Clear Bowl
- G** - Valve
- H** - Valve handle



**Step 4** Open drain valve, push in and turn.



**Step 5** Drain out the water/dirt that has accumulated in the bottom of the bowl.



**Step 1** Turn the engine off (or switch to spare filter in duplex set up) Shut off the fuel supply valve.



**Step 6** Close drain valve Allow dirt/water to settle again. As the fuel is drained out of the separator in step 5, more dirt/water will be flushed from the filter and will collect in the bottom of the bowl.



**Step 2** Open the bleed screw This will break the vacuum in the filter allowing water and particulate matter to be released from the filter element.



**Step 7** If necessary repeat step 5 to 6. Open fuel supply valve.



**Step 3** Allow water and dirt to settle into bowl. Large droplets of water/dirt will fall to the bottom of the bowl.



**Step 8** Prime the filter. Close the bleed screw.